



- Sweep Tested from 650MHz
- Flexible Cable Construction to Facilitate Deployment
- 10GbE Application Assurance for all Standards-Supported Lengths
- RoHS Compliant, Flame-Retardant Cable Design

#### FEATURES

- Category 6A Component Compliant
- Unique Design to Suppress ANEXT
- Designed for Standard Bend Radius Termination
- Standard Round Cable Design
- Rip Cord Provided for Easy Cable Preparation

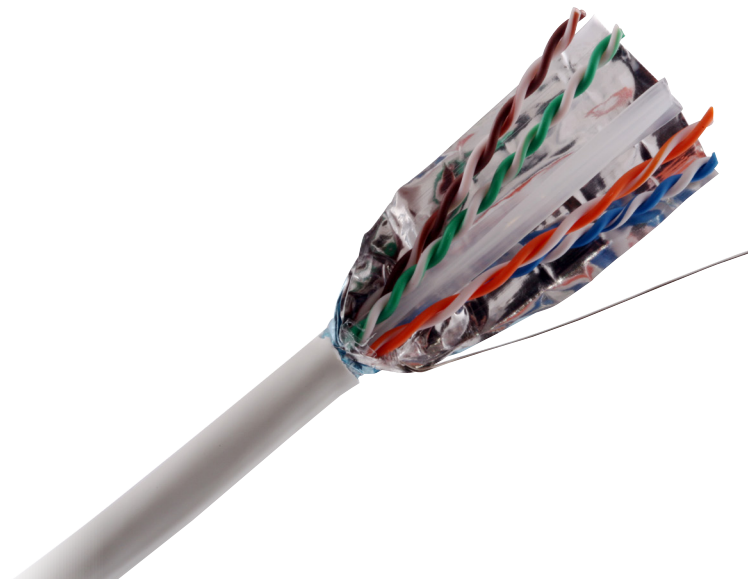
#### SPECIFICATIONS

- Conductor: 23 AWG Solid Bare Copper
- Insulation:
  - CM: HDPE per ASTM D4565-94
  - LSZH: PE per ASTM D4565-94
- Jacket:
  - CM: PVC
  - LSZH: LSZH
- Pairing:
  - 1: Blue + Blue/White
  - 2: Orange + Orange/White
  - 3: Green + Green/White
  - 4: Brown + Brown/White
- NVP: 65%
- Rip Cord: Inside Cable Jacket

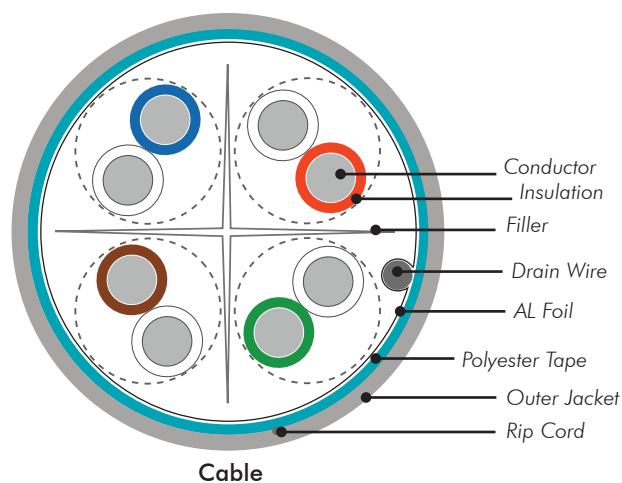
#### STANDARDS

- TIA-568-C.2 Cable Requirements
- ISO/IEC 11801 Compliant
- UL 444
- Flame Test: IEC 60332-1

## SPEEDCHANNEL Category 6A F/UTP Cables



**SPEEDCHANNEL Category 6A** cable provides significant margin above all electrical transmission performance requirements specified in ANSI/TIA-568-C.2 and ISO/IEC 11801 standards. The cable is designed to suppress "Alien Crosstalk" while maintaining 10 Gigabit Ethernet (10G BASE-T) throughout per IEEE 802.3an. The IEEE has identified "Alien Crosstalk" as the dominant noise source affecting the operation of 10G BASE-T.



#### APPLICATIONS

- Ethernet 10/100/1000/10G BASE-T
- Data Center, LAN and Storage Area Cabling Infrastructure
- Power Over Ethernet Applications
- Commercial, Medical, Government and Education Facilities
- Bandwidth Intensive Processing:
  - 3D Modeling
  - Broadband Video
  - On-Line Document Publishing



ORDERING INFORMATION

**SPEEDCHANNEL ASCENT Category 6A F/UTP Cable** has been finely tuned to operate with Hubbell ASCENT Category 6A Shielded jacks, patch panels and patch cords to deliver maximum channel performance.

The Hubbell **SPEEDCHANNEL ASCENT Category 6A System** provides the highest margins in the industry against category 6A (TIA) and class EA (ISO) performance requirements.

Spools

Color	CM Catalog No.	LSZH Catalog No.
Blue	<b>C6ASCSFTPCMB</b>	<b>C6ASCSFTPLSZHB</b>
Gray	<b>C6ASCSFTPCMGY</b>	<b>C6ASCSFTPLSZHGY</b>
Pink	<b>C6ASCSFTPCMPK</b>	<b>C6ASCSFTPLSZHPK</b>
White	<b>C6ASCSFTPCMW</b>	<b>C6ASCSFTPLSZHW</b>

ELECTRICAL CHARACTERISTICS

Frequency (MHz)	Characteristic Impedance		ATT (dB/100m)	RL (dB Min)	NEXT (dB Min)	PS NEXT (dB Min)	ELFEXT (dB Min)	PS ELFEXT (dB Min)	PS ANEXT (dB Min)	PS AACRF (dB Min)	PD (ns/100m Max)
	Upper limit Zu (Ω)	Lower limit Zl (Ω)									
1	—	—	—	20.0	74.3	72.3	67.8	64.8	67.0	67.0	570.0
4	115.2	86.8	3.80	23.0	65.3	63.3	55.8	52.8	67.0	66.2	552.0
8	112.6	88.8	5.31	24.5	60.8	58.8	49.7	46.7	67.0	60.1	546.7
10	111.9	89.4	5.93	25.0	59.3	57.3	47.8	44.8	67.0	58.2	545.4
16	111.9	89.4	7.49	25.0	56.2	54.2	43.7	40.7	67.0	54.1	543.0
20	111.9	89.4	8.38	25.0	54.8	52.8	41.8	38.8	67.0	52.2	542.0
25	112.9	88.5	9.38	24.3	53.3	51.3	39.8	36.8	67.0	50.2	541.2
31.25	114.1	87.7	10.50	23.6	51.9	49.9	37.9	34.9	67.0	48.3	540.4
62.5	118.3	84.5	14.99	21.5	47.4	45.4	31.9	28.9	65.6	42.3	538.6
100	121.9	82.0	19.14	20.1	44.3	42.3	27.8	24.8	62.5	38.2	537.6
200	128.8	77.6	27.58	18.0	39.8	37.8	21.8	18.8	58.0	32.2	536.5
250	131.5	76.0	31.07	17.3	38.3	36.3	19.8	16.8	56.5	30.2	536.3
300	133.9	74.7	34.27	16.8	37.1	35.1	18.3	15.3	55.3	28.7	536.1
400	138.2	72.3	40.05	15.9	35.3	33.3	15.8	12.8	53.5	26.2	535.8
500	142.0	70.4	45.26	15.2	33.8	31.8	13.8	10.8	52.0	24.2	535.6

Cable that meet the requirements of the characteristic impedance are not required to be measured for return loss; alternately cables that meet the return loss requirements are not required to be measured for characteristic impedance.

RELATED PRODUCT

Ascent Shielded Jacks, Category 6A

Category	Pckg. Quantity	B-Wired Catalog No.	A-Wired Catalog No.
6A	2	<b>SJ6A2B</b>	<b>SJ6A2A</b>
6A	24	<b>SJ6A24B</b>	<b>SJ6A24A</b>



UDX-Series 1U, 24 Port Shielded Patch Panels

Ports	Height	Rack Units	Black	Silver
24	1.75" (45)	<b>1</b>	<b>PSJ24BK</b>	<b>PSJ24S</b>

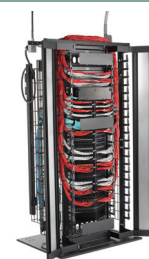


Ascent Category 6A Patch Cords

Length	Catalog No.	Length	Catalog No.
3'	<b>PC6A03xx</b>	15'	<b>PC6A15xx</b>
5'	<b>PC6A05xx</b>	20'	<b>PC6A20xx</b>
7'	<b>PC6A07xx</b>	25'	<b>PC6A25xx</b>
10'	<b>PC6A10xx</b>	xx= color. B=Blue, GY=Gray	



INTEGRATED SOLUTIONS



Cross-Connect Solutions

- Data Center Solutions
- XXL Cable Organizers
- NEXTFRAME® Cable Management
- Velcro® Cable Management
- ShieldBond Grounding Systems
- NEXTSPEED Ascent Horizontal Cable
- BIDnet™

