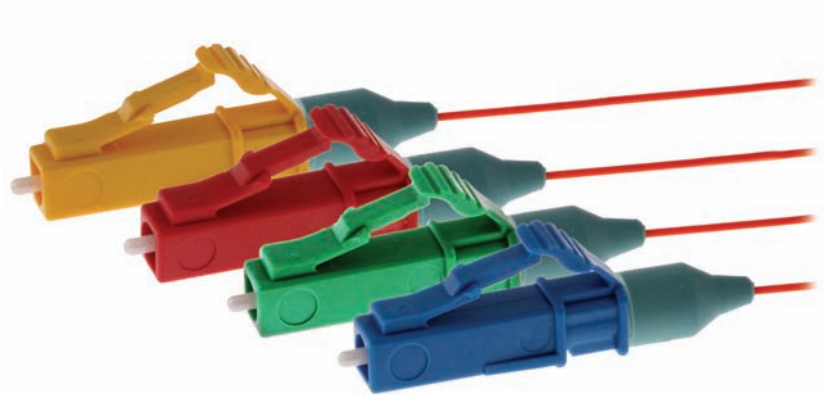


HUBBELL
OptiChannel Keyed LC Connectors



- Supported by the Mission Critical Permanent Link Fiber Warranty
- Cleave, Crimp, and Connect Termination for Quick Deployment
- CSI Specs, Drawings, and Advanced Termination Tips Available
- ROHS Compliant



Supplied with dust caps installed (not shown)

FEATURES

- Precision Low-Loss Factory Pre-Polished Connector with Direct Crimp Strain Relief
- Fast and Easy Connector Termination, with No Adhesives or Field Polishing Required
- All fibers Supported: OM1, OM2, OM3, SM
- Compatible with Tyco Electronics Secure Keyed LC systems

Hubbell's **OptiChannel® Keyed LC Fiber Connectors** are a reliable, pre-polished field termination solution, eliminating adhesives and polishing. **OptiChannel Keyed LC Connectors** provide a quick, simple termination method, featuring a pre-installed cleaved fiber with an index-matching splice element, and a precision factory pre-polished zirconia ceramic ferrule. Micron-precision internal fiber splice alignment provides a low loss, high yield termination.

Utilizing a proven cleave and crimp method, **OptiChannel Keyed LC Connectors** exceed all of the mechanical, optical and environmental requirements of TIA-568-C.3 Termination can be completed in less than two minutes. Simply insert the cleaved fiber into the connector, and crimp into place while applying a slight force on the fiber.

SPECIFICATIONS

- Insertion Loss: 0.5dB Typical, 0.75dB Max.
- Singlemode Return Loss: 55dB Typ., 40dB Min.
- Multimode Return Loss: 35dB Typ., 22dB Min.
- Operating Temperature Range: 0°C to +70°C
- Mating Durability: 500 Cycles <0.2 dB Change

APPLICATIONS

- Network-specific horizontal fiber to the workstation
- Restricted access fiber network outlets and cross-connects
- Restricted network equipment connections
- 10 GbE multimode and singlemode restricted networks
- Quick deployment restricted data links
- Color coded networks with enhanced security
- Network diversity requirements

STANDARDS

- TIA-568-C.3 Performance Requirements
- Telcordia GR-326 End Face Geometry
- Telcordia GR-326 Service Life Tests
- IEC61754-20 and TIA-604-10 Intermateability
- ROHS Compliant
- UL94-V0





ORDERING INFORMATION

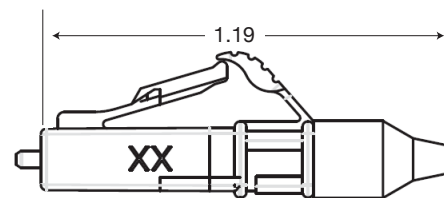
OptiChannel® Keyed LC Fiber Connectors

Description	Catalog Number	
50/125 10G MM-OM3 900/250 μM	FCKLCP50GM12xx	
50/125 MM-OM2 900/250 μM	FCKLCP50M12xx	
62.5/125 MM-OM1 900/250 μM	FCKLCP62M12xx	
9/125 UPC SM 900/250 μM	FCKLCP50M12xx	
LC Duplex Clip, Black	FCKLCDCLP12BK	

xx Standard Housing Colors - **RD**=Red, **GN**=Green, **BL**=Blue, **YL**=Yellow
 Special: **OR**=Orange, **BR**=Brown, **SL**=Slate, **VI**=Violet, **RO**=Rose, **AQ**=Aqua

Standard Boot Colors by Fiber Type-
 62.5 Micron OM1: Beige 50 Micron OM2: Black
 50 Micron 10G-OM3: Aqua Singlemode: Blue

DIMENSIONS in inches (Assembled)



DELIVERY

Bag of 12 individually bagged connectors with dust caps installed and termination instructions

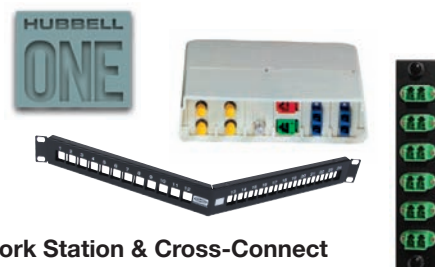
ACCESSORIES

Description	Catalog Number
Keyed LC Termination Kit, Complete	OFTKLCPK1
Keyed LC Crimp Tool, W/ Dies	OFCMTKLC1
Fiber Strip Tool, 250/900/2.0/3.0mm	OFSTRIP2
Cleave Tool, Keyed LC Connectors	OFCLVKLC1
Hubbell Precision Cleave Tool	OFCLV4
LC Duplex Clip, Black	FCKLCDCLP12BK

TYPICAL APPLICATION

- Fiber Cleave quality and cleave length at 8.0mm is critical. Refer to the product instructions and published tips on fiber cleaving and terminating pre-polish connectors. Broken fibers can cause failure.
- Using the OFCLV4 or OFCLVKLC1 precision cleave tool is recommended for all terminations to optimize cleave quality and optical transmission.
- Refer to Hubbell instructions and technical publications for 250 micron OSP cable terminations. Strip length and break-out tube clamping during termination is critical to prevent fiber gaps.
- Contact Hubbell Premise Wiring Technical Services for additional publications on cleaving and termination.

INTEGRATED SOLUTIONS

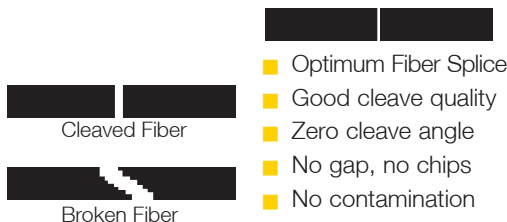


Work Station & Cross-Connect Terminations

- FSPK-Series Panel and UDX Multimedia Panel Connections
- Fiber Workstation Keyed LC Connections
 - iSTATION, IFP, AFP and SS-series Plates
 - FPR and UDX Series Panels
 - AMO, OFPPL and ISB Multimedia Housings

Delivery Systems Solutions

- Hubbell System One Floor Boxes and Fire-Rated Poke-Throughs
- HBL-Series Raceway Outlets: Metal & Non-Metallic
- Multi-Connect Recessed Wall Boxes



- Optimum Fiber Splice
- Good cleave quality
- Zero cleave angle
- No gap, no chips
- No contamination

