



- Third Party Verified Category 6A Component Exceeds TIA and ISO Limits
- Exclusive 1-Punch Termination Reduces Termination Time by 75%
- Mating Cycles Exceed Industry Standard by 4 Times
- Bulk & Green Packaging Reduces Excess Waste on the Job

FEATURES

- 4.5db min NEXT margin over TIA 568-C.2 component requirements at 500MHz
- 1.5 dB min NEXT margin over ISONEC 11801 component
- Supports permanent links: 2 - 100 meters
- Enhanced common mode design eliminates residual and reflected NEXT/ANEXT
- Designed and tested for 850mA of continuous current per conductor (1.7A per pair)
- Manufacturing: 100% factory tested
- Universal Wiring (T568A or T568B)

SPECIFICATIONS

- Nose contact material: beryllium copper with precious metal plating and nickel under-plating
- 2000+ mating cycles with FCC 8-position plug

STANDARDS

- TIA-568-C.2 Category 6A component
- ISO 11801/60603-7 Category 6A component
- Channel: Third-Party tested for TIA 568-C.2
- Category 6A and ISO 11801 Class E_A
- Application: Third-Party qualified for 10 Gigabit Ethernet Transmission IEEE 802.3an
- Current Capacity: Exceeds current levels for PoE+ IEEE 802.3at
- Mechanical: Verified to TIA-568-C.2
- UL Listed 1863

HUBBELL NextSpeed Ascent Category 6A System

Reliability

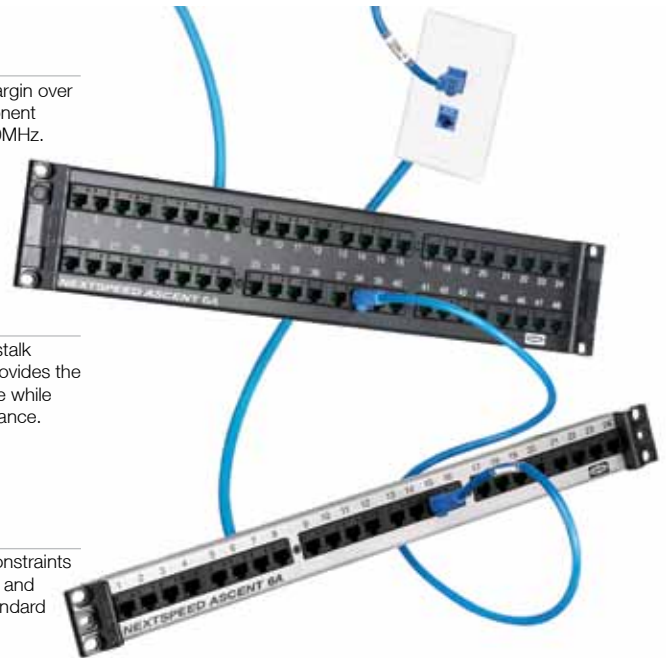
4.5db min NEXT margin over TIA 568-C.2 component requirements at 500MHz.

Performance

Patented zero-crosstalk contact structure provides the highest performance while maintaining true balance.

Interoperability

No exceptions or constraints Jacks, Patch Cords and Panels fit into all standard Hubbell Products.



NEXTSPEED® Ascent Category 6A is a tuned system of structured cabling components designed and balanced to operate together to deliver headroom beyond 625MHz and provide the highest level of reliability in the industry.

The Ascent component Category 6A system is the most advanced, highest performing system on the market, exceeding all current and proposed C6A specifications.

The Ascent system is third party verified exceeding all TIA and ISO component performance requirements. The well balanced design of the **NEXTSPEED®** Ascent system can be utilized in links under 10 meters, the perfect solution for the datacenter, providing a fully compliant solution from 2 to 295 meters.

The Ascent system provides a transparent signal path for today's and future applications, technologies and trends in the datacenter and the enterprise, decreasing installation time, while providing a robust infrastructure solution for mission critical applications.

APPLICATIONS

- 10GBASE-T (10-Gigabit Ethernet)
- Consolidation, Server Clustering & Scalability Virtualization
- Mass Data Storage, Storage Area Networks (SAN)
- Web enablement of applications (WEB 2.0)
- Voice Protocol – VoIP, SIP, SCCP, MGCP
- Video Protocol – IPTV, RTSP, RTP



NEXTSPEED® Ascent Category 6A Jacks

The NEXTSPEED® Ascent Category 6A jack exceeds TIA and ISO Category 6A component specifications, delivering extended bandwidth and reliability for all LAN, multimedia and Power over Ethernet applications.

Delivery: 1 per Bag/Carton of 25. 25 per Bag/Carton of 1
 Catalog No. **HJ6AXX** ✓10G Catalog No. **HJ6AXX25** ✓10G



XX = See Jack Color Options below.

AL=Almond	BK=Black	B=Blue	EI=Electric Ivory	GL=Gold	GY=Gray	GN=Green	LA=Light Almond
OW=Office White	OR=Orange	P=Purple	R=Red	TI=Telco Ivory	W=White	Y=Yellow	

NEXTSPEED® Ascent, Category 6A, Component Patch Panels

The NEXTSPEED® Ascent Category 6A Panels are third party verified for TIA and ISO Category 6A component specifications and are the perfect solution for the datacenter delivering extended bandwidth and reliability for all IEEE Ethernet applications.

Format	Width	Color	Catalog No.	
Standard	19" (483)	Black	HP6AXXU	✓10G
Standard	19" (483)	Silver	HP6AXXUS	✓10G
Angled	19" (483)	Black	HP6AXXAU	✓10G



Replace "XX" with port size: "24" = 24 ports; "48" = 48 ports

NEXTSPEED® Ascent Category 6A Patch Cords

Color: Gray
 Catalog No. **HC6AxxYY** ✓10G

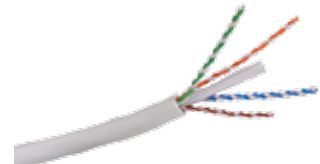
xx = Standard Color:
"B" = Blue; **"GY"** = Gray For other colors replace color designation with one of the following:
OR = Orange, **R** = Red, **GN** = Green, **P** = Purple, **W** = White

YY = Standard Length:
 "01" = 3'; "03" = 3'; "05" = 5'; "07" = 7'; "10" = 10'; "15" = 15'; "20" = 20'.
 MTO lengths: 25', 30', 35', 40', 45', 50', 55', 60', 75', and 100'.



NEXTSPEED® Ascent Category 6A Cable

Color	Catalog No.	Riser Spool (1000' length)	Catalog No.	Plenum Spool (1000' length)
Blue	C6ASRB	✓10G	C6ASPB	✓10G
Gray	C6ASRGY	✓10G	C6ASPGY	✓10G
White	C6ASRW	✓10G	C6ASPW	✓10G
Yellow	C6ASRY	✓10G	C6ASPY	✓10G



NEXTSPEED® Ascent Category 6A Trunk Cable Assemblies

BIDnet™ Pre-Terminated Cable Assemblies are Make-to-Order items. Please call our Inside Sales Team for lead-time and availability. ✓10G

- 100% tested.
- High performing factory terminations eliminate installation labor and preparation.
- Balanced, pre-terminated cable assemblies provide improved channel performance.



NEXTSPEED® Ascent Category 6A Field Termination Kits

Description*	Catalog No.	
64-Pair Kit with legs and 16 connecting blocks*	6110FTK64WL	✓10G
64-Pair Kit w/o legs and 16 connecting blocks*	6110FTK64NL	✓10G
192-Pair Kit with legs and 64 connecting blocks*	6110FTK192WL	✓10G

* 6-110, 4-pair connecting blocks.
 See page E14 for more information.

